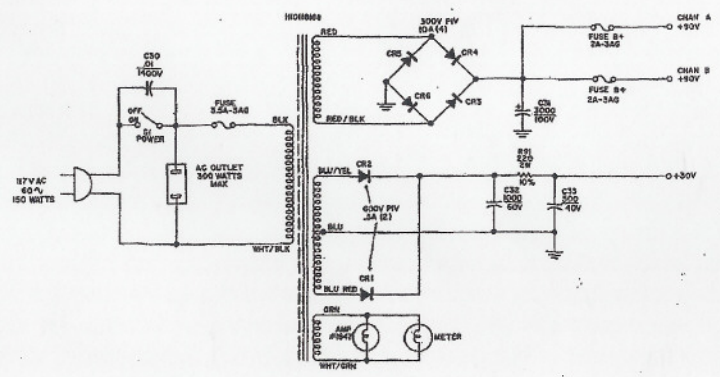


- NOTES:**
1. UNLESS OTHERWISE SPECIFIED—
  2. ALL RESISTANCE VALUES IN OHMS, 5%.
  3. ALL RESISTORS—1/2 WATT.
  4. ALL CAPACITOR VALUES IN UF.
  5. RESISTANCE MEASUREMENTS ARE NOT GIVEN DUE TO THE WIDE VARIATION IN INTERNAL TRANSISTOR RESISTANCES.
  6. VOLTAGE READINGS TAKEN AT ZERO SIGNAL.
  7. \* INDICATES NON-POLARIZED.
  8. # INDICATES COMPONENTS NOT ON PC BOARD.



SCHEMATIC CITATION B